



OPTION 1: Rig / Rack Mount Setup

***Included:** Hex key, mounting hardware.
***Required:** None.

STEPS

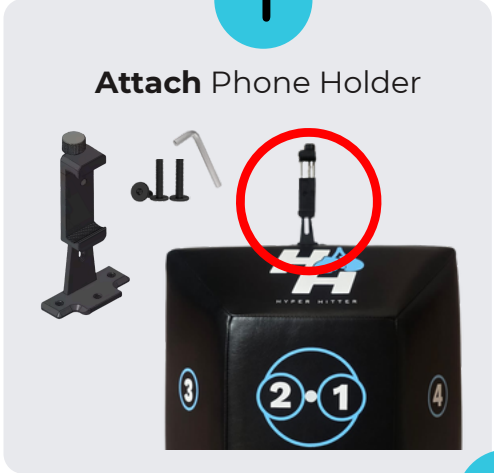
1. **Attach** the phone holder to the top of the Hyper Hitter using the three hex screws and supplied hex key.
2. **Insert** the top steel mounting peg through a through-hole on the rig or rack.
3. **Slide** on the plastic spacer, then the steel spacer, onto the peg on the opposite side of the upright.

4. **Tighten** the top steel knob to secure the mounting peg.
5. **Clamp** the base of the Hyper Hitter using the two bottom steel tightening knobs.

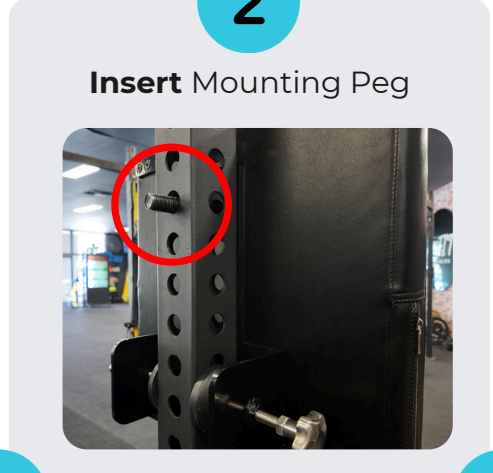
Compatibility

- Fits standard **75–80mm** rig upright or rack (3–3.15 in)
- Requires a rig upright or rack with a **21-30mm through-hole** (0.83–1.18 in)
- Ensure the rig or rack is **securely fixed to the floor before use.**

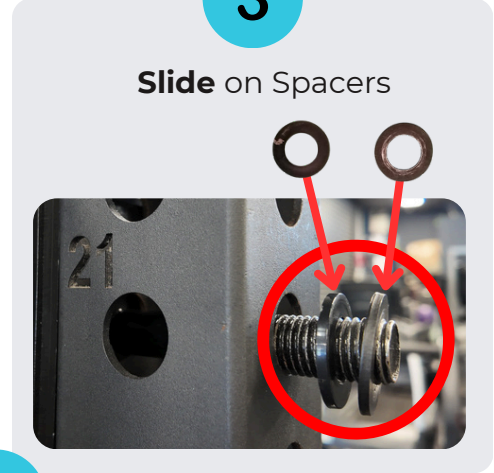
1



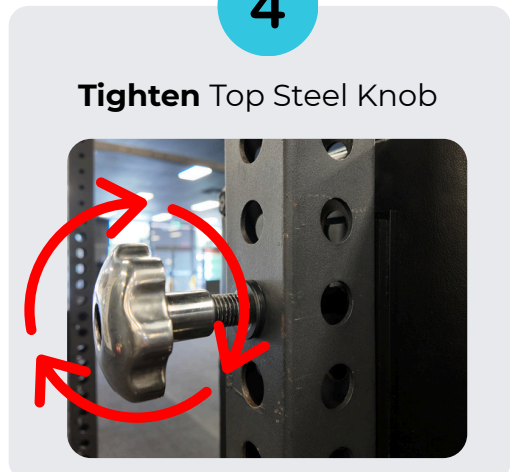
2



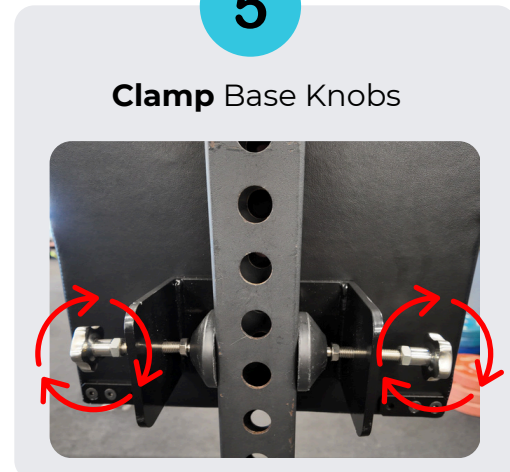
3



4



5





OPTION 2: Wall Mount Setup

***Included:** Hex key, steel wall anchors.
***Required:** Drill, masonry drill bit, hammer and a spanner.

STEPS

1. **Attach** the phone holder to the Hyper Hitter using the three hex screws and supplied hex key.
2. **Remove** all four corner wall brackets using the supplied hex key.
3. **Rotate** all four corner wall brackets so one hole faces outward for mounting.
4. **Remove** the main mounting bracket using the supplied hex key.

5. **Position** the Hyper Hitter on the wall, mark the holes, then pre-drill for the wall anchors.

6. **Secure** the Hyper Hitter to the wall using the supplied steel wall anchors, hammer and a spanner.

Recommendations

- Mount only to **flat concrete** or **brick walls**.
- Do not drill into mortar joints. Drill into solid brick or concrete only.
- A second person to assist is recommended during installation.

1

Attach Phone Holder



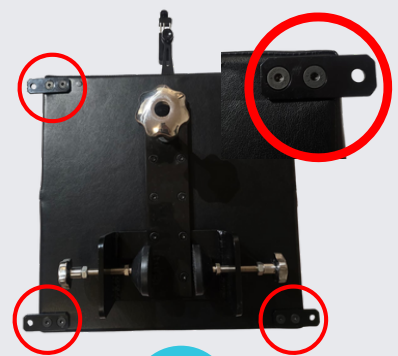
2

Remove Corner Brackets



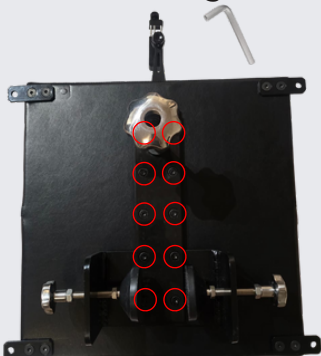
3

Rotate Corner Brackets



4

Remove Mounting Bracket



5

Position & Mark Holes



6

Secure Hyper Hitter to Wall

